

Corporate Asset Management Strategy & Plan

Corporate Resources Overview & Scrutiny Committee

8 April 2014

A Great Place to Live and Work

“To promote cross directorate collaboration to achieve the best use of the Council’s assets for service delivery, deliver an optimum return from our commercial and agricultural investment estate and facilitate regeneration and development”

Five Core Services

- Children's Services (including schools)
- Community Assets
- Care Properties (including BUPA)
- Council Housing
- Investment Properties

Document Structure – 3 Parts

1. Asset Management Objectives
2. Asset Management Strategy
3. Regional Asset Plans

Asset Management Objectives

- Vision and Values
- Corporate Objectives
- MTFP
- Core Service Strategies
- Corporate Objectives

Asset Management Strategy

1. 7 Stars - principles e.g. service focus, asset group approach
2. Scope and Benefits – specific service delivery benefits e.g. co-location, optimum building use
3. Governance – Members and Officers
4. Asset Management Performance
5. Operating Model
6. Stakeholders
7. Risk Management

Regional Asset Plans

- Biggleswade and A1 Corridor
- Flitwick and Ampthill
- Dunstable Area
- Leighton Buzzard Area

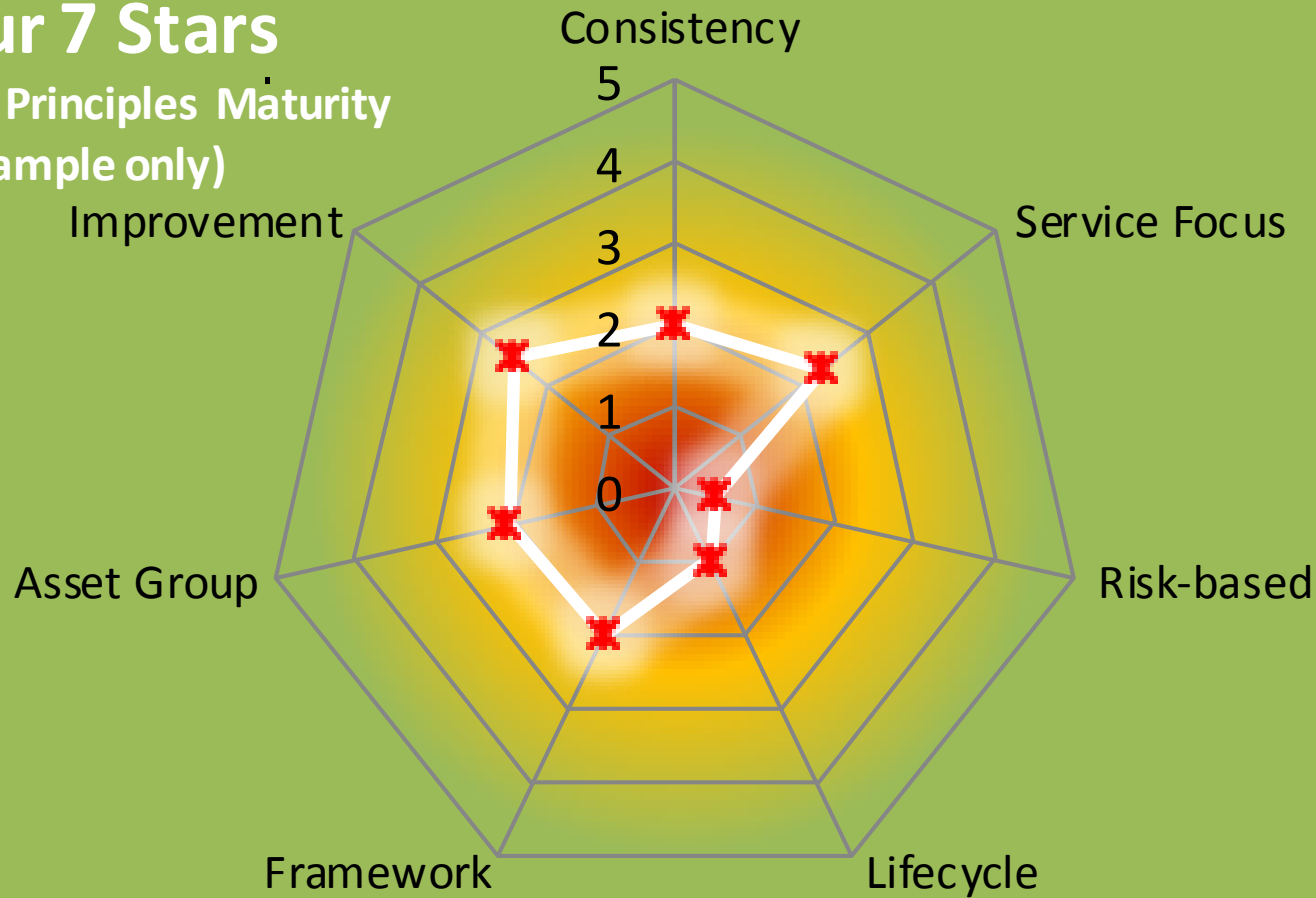
Appendices

- KPIs
- Roles and Responsibilities
- Financial Targets
- Risk Management
- Service Asset Strategies

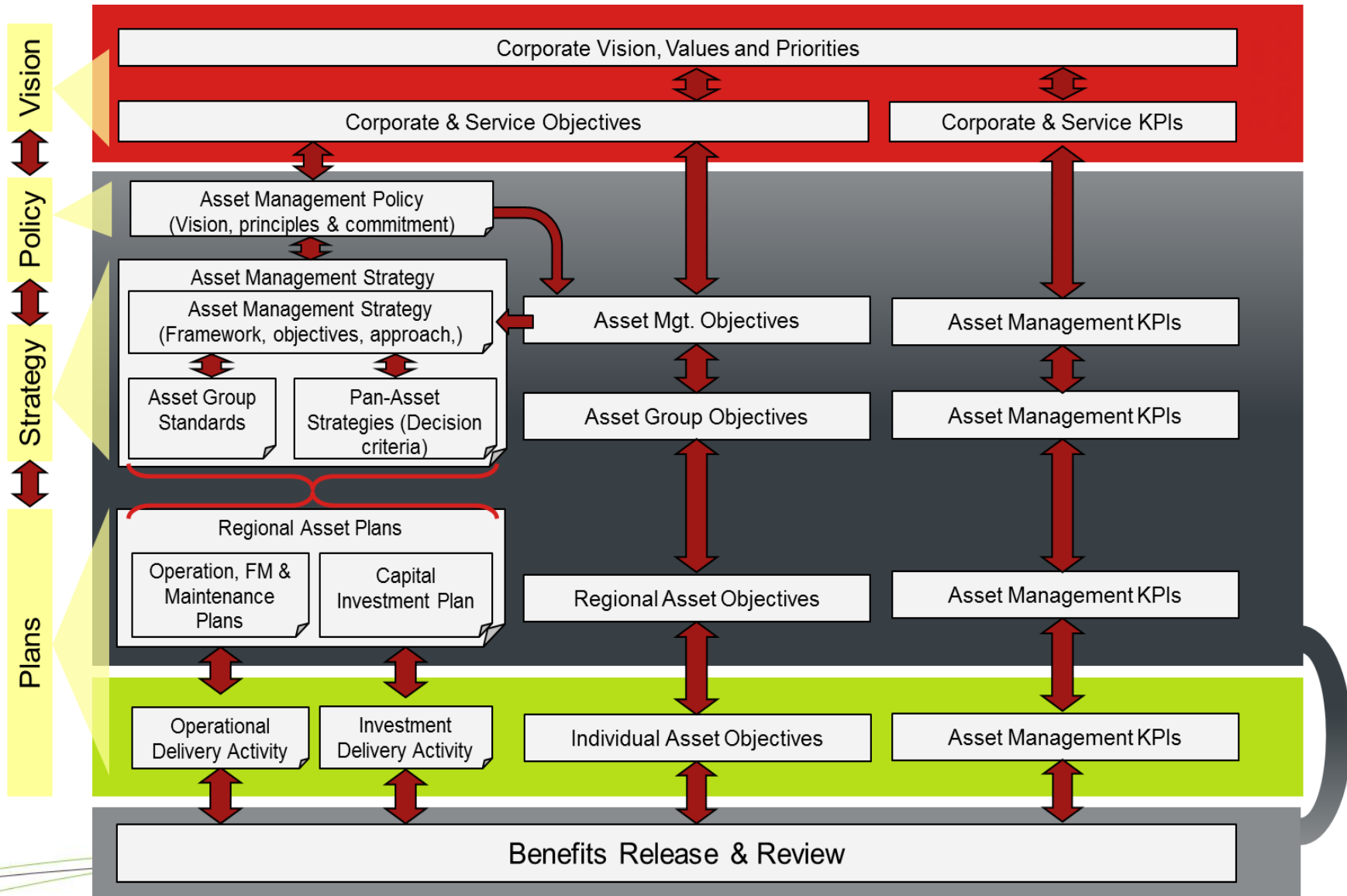
Maturity Assessment

Our 7 Stars

AM Principles Maturity
(example only)



Performance Cascade



Operating Model

